

UTP Modular Patch Panel

GENERAL

GTE Telecom Copper Patch Panels are modular and provide an aesthetically pleasing solution for housing modular jacks. These lightweight panels are compatible with all typical industry accepted modular jacks. 1RU, 24-port patch panels and 2RU, 48-port patch panel is available in a flat version. All models include integral cable management.

FEATURES:

- available to fit with 180 ° UTP keystone jacks
- inclusive grounding wire
- suitable for all 19" EIA racks
- 24 ports in 1U height
- RoHS compliant
- Performance conforms to TIA/ EIA- 568-B.2-1, ISO 9001
- Support T568 A&B Wiring

Modular Patch Panel

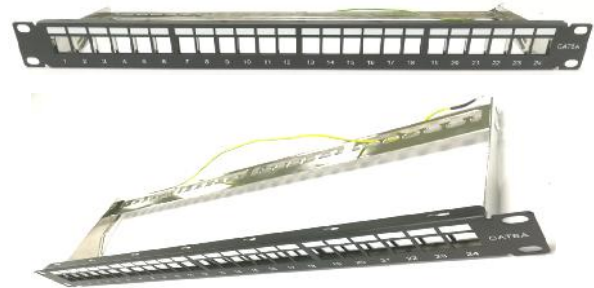
Universal Unloaded Patch Panel

GTE universal unloaded patch panel is in specified design to adopt 90 ° shielded and unshielded keystone jack, and the feature design is also available to fit with shielded and unshielded keystone jacks. Shutter design is ideal for dust protection. Also the finish product comes with cable management bar at the back side. The finish size of this unloaded patch panel is 2U 19", suits for 19" rack installation



Modular Patch Panel

GTE High Density Unloaded Patch Panel is in dedicated design to adopt 180 shielded die-casting keystone jack, to meet different place use intentions. And in additional, this modular patch panel is also available to fit with 180 ° UTP keystone jacks. Each port has sequence numbering, and above markable position, is right to for future port identification or re management. Main body and back cable management made by single complete steel plate, finished in 1U 19" size, suits for all standard 19" rack installation.

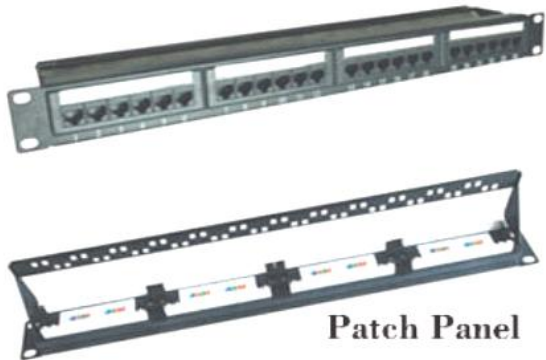


SPECIFICATIONS

-) I.D. Plate Panel: Transparent Color Paper SPCC, 1.5 mm thickness with Black (RAL 9005) Color painted
-) Support Bar: SPCC, 1.5 mm thickness with Black (RAL 9005) Color painted
-) Tool-less Termination.
-) Backward compatible to Category 5e, 5, 3
-) Related keystones can accept 22- 26 AWG solid and stranded cables
-) Dust cover for each port provided to protect against damage and dust
-) Complies with Category 6 Channel Link Testing
-) Support 100Base-TX, 1000Base- TX, 10GBase- TX Ethernet
-) Support Data, Voice, Video and other applications
-) Standard back cable management
-) Earthing cable attached.
-) Operating Temperature -10 to +70 C

UTP Modular Patch Panel

PACKING



ORDERING

| Item | Description | Packaging |
|----------|--------------------------|-----------|
| GTEUPP12 | Patch Panel 12 port | Unit |
| GTEUPP24 | Patch Panel 24 port – 1U | Unit |
| GTEUPP48 | Patch Panel 48 port – 2U | Unit |