

Outdoor Wall mounted Termination Box

General

Fiber optic termination box provides efficient cable connections between outside plant cables and equipment inside the buildings and communications facilities.

Box integrates fiber splicing, storage and cable connections together in a unit. They can manage both bundle type and ribbon type fiber cables.

It is with large working space to integrate the pigtail, cables and adapters for fiber management.

This fiber optic termination box is designed for wall mounted using, cold roll steel material, with adapter plate & splice tray, distribution and management



Features

- Box made of from unflammapainted steel with Thickness 1.5mm.
- Plastic tray inside, 12/24 cores per tray.
- Box integrates fiber splicing, storage and cable connections together in a unit.
- Pre-terminated Adapter Type SC/APC and Pigtails.
- Cable entry ports suitable for single fiber, bundle & ribbon fiber cables.
- Reasonable design ensures the cables are in good order.
- High Protection Rating (IP65) in compliance with IEC 60529.
- Pole mounted & bottom base available With lock on front door.
- Integrates fiber splicing, storage and cable connections together in a unit.
- Splitter ready ; enough space for adding splitter.
- 4,8,12,16, 24,36, 48, 96 ... capacity customized.

- Top & Bottom Cable Entries are available.
- Different No. of cable entries 2 , 4 and 8.
- Secured with anti-theft locking mechanism
- Clamping for feeder cable and drop cable, fiber splicing, fixation, storage,

Parameters:

1. Operating temperature:-30~+60°C
2. Relative humidity: 85%(+30°C)
3. Atmospheric pressure:70~-106Kpa
4. Durability: >1000 times
5. Standard working wavelength: 850nm,
6. 1310nm, 1550nm, 1650nm.
7. fully protected from corrosion 240 hours with ability to withstand against climate change.

Specifications

WMT model type is designed and built to work as Optical Distribution Box (ODB) and Optical Splitter box (OSB) .

The fiber splicing, splitting, distribution can be done in the box.

Pocket under splice cassette is ready to house splitter Module in each Box



Single-Mode ODB

Parameters

Optical Wavelength

Insertion Loss

Return Loss

Adapters

Operating Temperature

Pigtail Standard

TIA and IEC Compliance

Specifications

1260 nm to 1650 nm (Typical: 0.20dB)

Maximum 0.30 dB

Min. 50 dB for PC type Adapters , Min. 60 dB for APC type

- 10°C to + 60°C

SM (G.652-D, G.656 & G.657A) Connector /Adapter Standard Telcordia, EIA /

Multi-Mode ODB

Parameters

Optical Wavelength

Insertion Loss

Minimum 20 dB for PC type Adapters

Pigtail Standard

Connector /Adapter Standard

Specifications

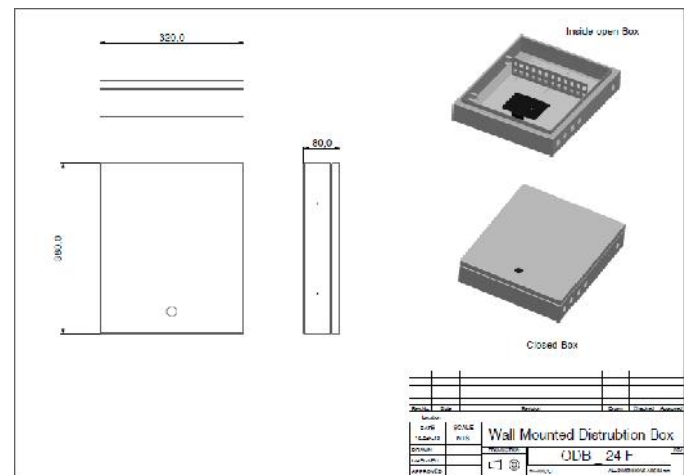
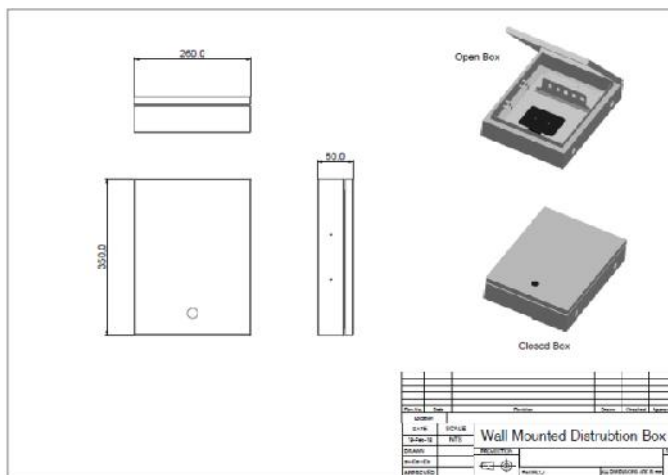
850 nm to 1300 nm

Maximum 0.30 dB (Typical: 0.20dB)

Return Loss - 10°C to + 60°C

MM (OM1 /OM2 /OM3 and OM4)

Telcordia, EIA / TIA and IEC Compliance



Ordering

WMT - Model					
Model No	Capacity	No of Splice Tray	Splice Tray Capacity	Dimensions	Connector Type
				(W x H x D) mm	
WMT - 2	2F	1	12F	280 x 240 x 80	
WMT - 4	4F	1	12 F	280 x 240 x 80	SC/APC
WMT - 8	8F	1	12 F	280 x 240 x 80	SC/PC
WMT - 16	24F	1	24 F	280 x 240 x 80	FC/PC
WMT - 24	24F	2	12 F	320 x 260 x 80	ST/PC
WMT - 36	36F	3	12 F	400 x 380 x 100	LC/APC
WMT - 48	48F	2	24 F	400 x 380 x 100	LC/PC
WMT - 72	72F	3	24 F	400 x 480 x 120	
WMT - 96	96F	4	24 F	400 x 480 x 120	

Accessories

Description	Part No
Cable Holding Gland - D21	CHG-401
* Cable Holding Gland - D16 (Optional)	* CHG-402
Cable Holding Gland - D13.5	CHG-403
Swing Door Lock	SDL-901
FRP Holder - SM	CHS-903
Cable Holder - BG	FRP-904
6 Port Universal Adaptor Holder	UAD-801
HF Round Management	HFR-802
Mira-DTX Splice Tray	STX -701
Hexagonal Lock	HEXL-2001
Hexagonal Lock Allen Key	HEXL-2002
*RS Security Lock (Optional)	*LK-902
Splice Protection Sleeve 60 mm	SPS-907
Protection Tube	SPS-908
Cable Tie	SPS-909
Earthing wire	SPS-910

